

Sealed maintenance-free lead-acid batteries series DTM L ASTERION brand are manufactured by AGM technology (electrolyte absorbed in glass fiber separators) and equipped with VRLA valves. Series DTM L refers to a Long-Life series with a service-life up to 12 years.

Due to a wide range of batteries and their high performance, are recommended for use in a variety of uninterruptible power supply systems, including exacting electrical appliances (submersible and circulation pumps, boilers of heating systems), emergency power supply and other electrical devices.



Battery construction

Element	Positive plate	Negative plate	Case	Lid	Valve	Terminal	Separator	Electrolyte
Material	Lead dioxide	Lead	ABS		Rubber	Copper	Fiberglass	Acid

Specifications

Nominal voltage.....	12 V
Cell.....	6
Design life.....	10-12 years
Nominal capacity (25°C)	
10 hours rate (23 A; 1,8 V/cell).....	230 Ah
5 hours rate (44,6 A; 1,75 V/cell).....	223 Ah
1 hours rate (153 A; 1,6 V/cell).....	153 Ah
Self-discharge.....	3% capacity per month 25°C
Internal resistance (25°C).....	2,8 mΩ

Operating temperature range

Discharge.....	-20÷60°C
Charge.....	-10÷60°C
Storage.....	-20÷60°C
Maximum discharge current (25°C).....	1100A (5sec)
Cycle mode (2,35÷2,4 V/cell)	
Max.charge current.....	69 A
Temperature correction factor.....	30 mV/°C
Standby mode (2,25÷2,3 V/cell)	
Temperature correction factor.....	20 mV/°C

Application

- Uninterruptable power supply
- Back up power supply
- Medical devices
- Wheelchair
- Space-heating system
- Renewable energy systems

Performance & characteristics

- AGM technology allows to recombine 99% of the generated gas;
- No restrictions on air transportation;
- Compliance with the UL requirements;
- Lead plates, alloyed by calcium, provide high energy density;
- Maintenance-free. Do not require distillate topping;
- Long service life;
- The battery case is made of flame-retardant ABS plastic.

Dimensions (±2mm)

Length, mm.....	520
Width, mm.....	269
Height, mm.....	203
Height over terminals, mm.....	208
Weight (±3%), kg.....	72,6

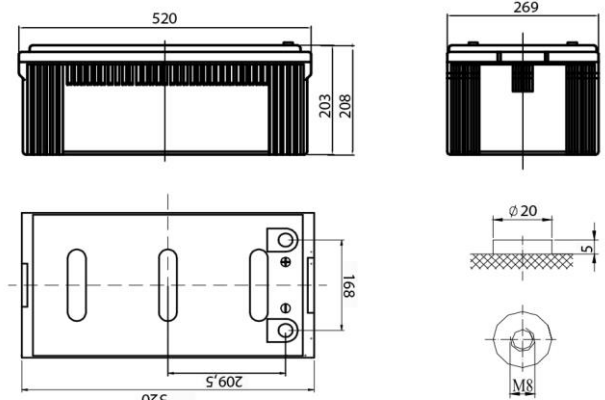
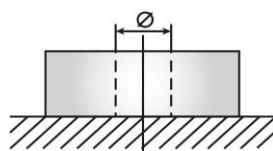
Layout

F



Terminal type

Insert Ø8 mm

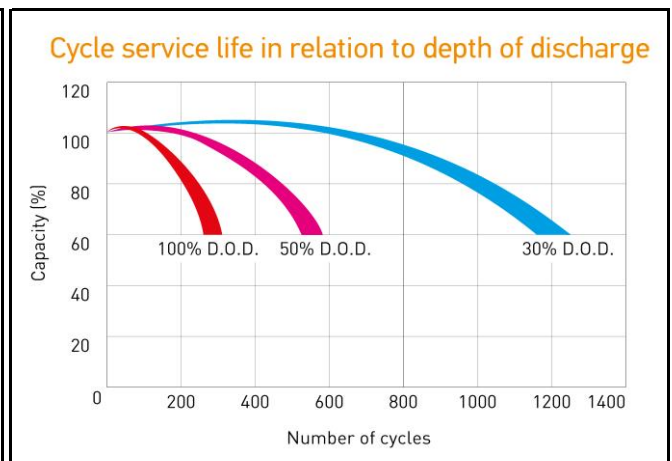
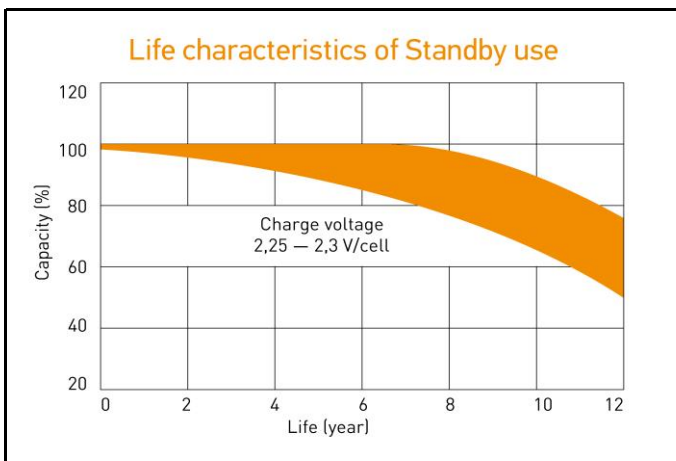
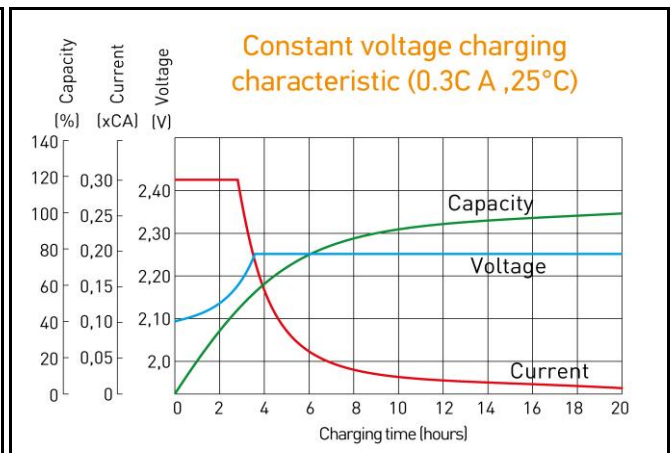
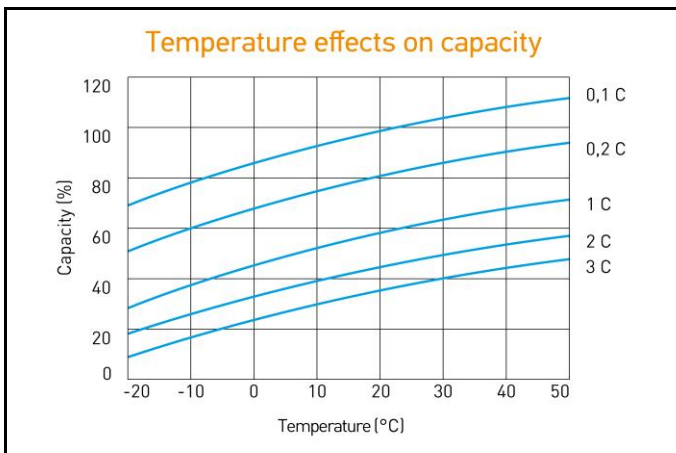


Discharge Constant Current, A (25°C)

V/cell	5 min	10 min	15 min	30 min	45 min	1 h	3 h	5 h	10 h
1,60	678	488	371	242	182	153	68,5	45,4	23,4
1,65	631	462	367	241	180	151	68,2	45,1	23,3
1,70	589	436	365	240	179	150	67,8	44,9	23,2
1,75	553	410	359	236	176	149	66,8	44,6	23,1
1,80	519	389	348	233	174	148	66,5	44,3	23,0

Discharge Constant Power, W/cell (25°C)

V/cell	5 min	10 min	15 min	30 min	45 min	1 h	3 h	5 h	10 h
1,60	1 206	879	677	469	349	296	131	86,7	45,6
1,65	1 131	837	673	466	347	294	130	86,4	45,4
1,70	1 053	809	666	462	345	291	129	86,1	45,2
1,75	981	739	658	459	339	288	128	85,8	45,0
1,80	954	720	649	455	333	284	126	85,4	44,9



ALL DATA IS SUBJECT TO CHANGE WITHOUT NOTICE